

Traveling by Train/ Public Transport

You have two options to travel to Keele University by public transport.

You either come via **Stoke-on-Trent train station** or **Crewe train station**.

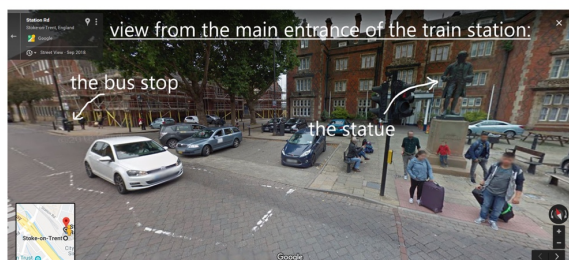
From Stoke-on-Trent

This is the easiest station to reach Keele University. If you would like to travel from the station via taxi we suggest you call Roseville Taxis to book one: 01782 61 3456

If you want to travel by bus you have to catch the 25 which will takes you to Keele University in around 25 minutes.

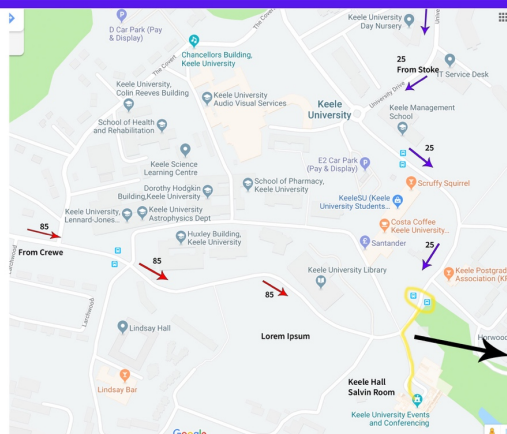
You can check the timetable to see when it leaves (make sure you look at the timetables that are outside term times):

<https://www.firstgroup.com/potteries/routes-and-maps/keele-university>



The bus leaves very close to the front of the station. Make sure you leave via the main exit (if you arrive on platform 2, you need to use the tunnel to get to platform 1 where the main exit is). The bus stop is on the other side of the road, so cross and turn left.

You want to get off the bus at the stop called **Horwood Hall** (this stop is not listed on the time table - it is the first stop after the Student's Union).



If you get out of the bus, turn right and follow the path up the road to the entrance of Keele Hall



From Crewe

Travelling from this station will take you longer but there may be much cheaper tickets available when you travel via this station (especially if you travel the day before and stay at a local hotel or BB). If you take the bus you have to catch the 85 to Hanley (or Newcastle-under-Lyme). Horwood Hall is also the stop for the 85 (here it is the stop before the Student's Union). If you get out of the bus, cross the road and turn right.

The bus only goes every hour so please do check the timetable (see ART! website events page). For example, if you would like to get to the symposium you can either catch the 08.44 from Crewe station and get to Keele early at 09.27 or the bus at 09.44 and get there at 10.27. If you want to leave you could get the bus at 17.57 and arrive at Crewe station at 18.40 or leave at 18.23 and arrive at 18.59. However, please note that these are country busses and are often delayed (or even 5 minutes early) so give yourself enough time in terms of catching the train. The bus also takes a circular route around a small village so don't be alarmed if you see the same shops/buildings twice.

The taxis in front of the station are very expensive (can even be around £35) and it would be better if you arrange to be picked up by Roseville Taxis. Call them before you travel to enquire (see number above).



Tickets: If you want a return ticket for the 85 to travel on the same day it is best to get a £5.50 day ticket. The 85 and 25 are operated by different companies. If you need to use both, as you are travelling via different stations, ask the driver for the best ticket.

Traveling by car

Keele is between Junctions 15 and 16 on the M6 motorway, and is just west of Stoke-on-Trent and Newcastle-under-Lyme. The University is halfway between Manchester and Birmingham. For Sat Nav use the **University postcode ST5 5BJ**.

If you need parking, please get in touch beforehand so this can be arranged (k.schuitema@keele.ac.uk)

Accommodation

If you want to stay overnight, we would recommend you stay in a town called Newcastle-under-Lyme, near Stoke (and not to be confused with Newcastle upon Tyne in North East England). The best place is the Travelodge: <https://www.travelodge.co.uk/hotels/424/Newcastle-Under-Lyme-Central-hotel>

You can also find accommodation via AirBB.

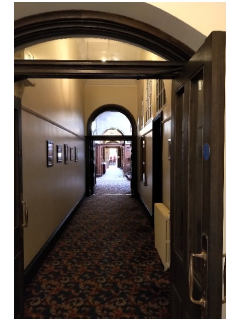
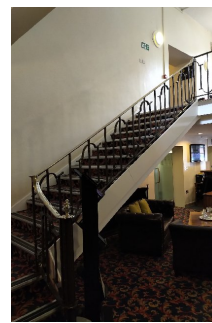
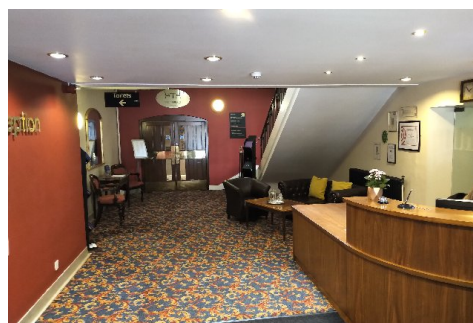
Venue

The Symposium takes place in Keele Hall in the **Salvin Room**.

Please take the main entrance.

You need to walk straight down the entrance hall, take the stairs up to the first floor. Here you turn left and walk straight down the long hall. The Salvin room is at the end of the hall. There will be signs on the day to help you.

Main Entrance



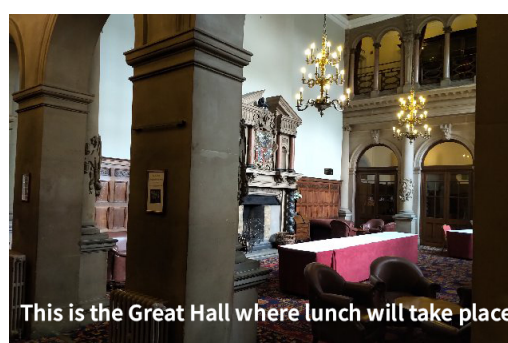
If you want to use the **lift**, you can find this on your left when you enter the main entrance. However, please get in touch so we can provide you with the right assistance (the buttons in the lift are sadly not so straightforward).

The **accessible toilet** is also near the main entrance but then on your right when you come through the main door.

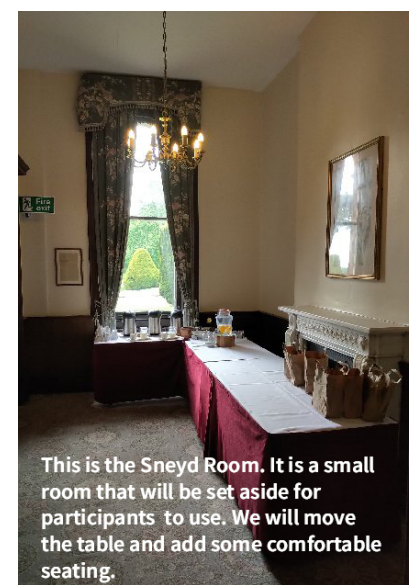
These are some pictures of the different **rooms** we will use on the day (although on the day of the symposium the rooms will be arranged differently and displays will be added).



This is the Salvin Room where the presentations will take place. The chairs will be arranged in a u shape around the desk in the middle.



This is the Great Hall where lunch will take place



This is the Sneyd Room. It is a small room that will be set aside for participants to use. We will move the table and add some comfortable seating.